



ISO 9001:2008  
通过ISO认证



ACS certification  
通过ACS认证



CE certification  
通过CE认证



cUPC certification  
通过cUPC认证



Zhejiang Taizhou Gentory Sanitary Ware Technology Co.,Ltd  
ADD: Tongyu Industrial Zone, Luqiao, Taizhou, Zhejiang, 318050, China.  
WEB: [www.gentory.com](http://www.gentory.com) EMAIL: [sale@gentory.com](mailto:sale@gentory.com)  
PHONE: (+86)576.82967000 MOBILE: (+86)137.3853.5111



**PROFESSIONAL**  
SHOWER SOLUTION



# ABOUT US

## Gentory team has a great passion for shower.

- 2016 More Wonderful things are happening ...
- 2015 Moved to new Office building in September
- 2015 KBIS show in USA, Canton fair, Shanghai KBC fair
- 2014 Export shower panels and shower heads to more than 100 countries.
- 2013 More than 100 showers are patented design certified
- 2012 European Union CE certified.
- 2012 MCE MILANO FAIR, Turkey show, KBIS show
- 2011 USA and Canada cUPC approved, cooperate with big CHINA BRANDS
- 2010 FRANCE ACS certified
- 2009 Attend ISH fair, launch new models and new design
- 2008 Patent Product registered
- 2008 Attend Shanghai Kitchen & Bath Fair
- 2007 Become member of China Council for the Promotion of International Trade



# “CREATE A NEW LOOK IN YOUR BATHROOM”



RETO SERIES | PAGE 01

GITE SERIES | PAGE 21

YOSE SERIES | PAGE 29

BEAUTY SERIES | PAGE 41

DORE SERIES | PAGE 51

TISI SERIES | PAGE 59



# RETO SERIES 乐特系列



01  
02

RETO SERIES



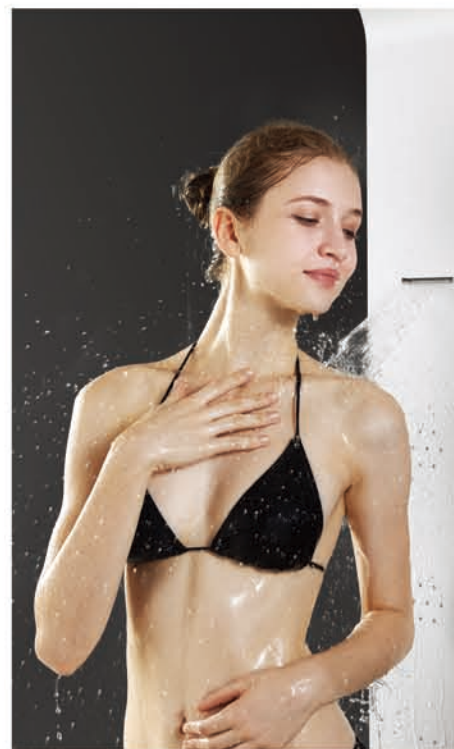
COMPACT DESIGN , CLEAN AND FUN



**A050**

Material:Aluminum Alloy  
Product size:1200×260mm  
Gross weight:10.8kgs  
Volume:0.08cbm





#### A051

Material: Aluminum Alloy  
Product size: 1400×220mm  
Gross weight: 12kgs  
Volume: 0.2cbm





## A152

Material: Aluminum Alloy  
Product size: 1600×220mm  
Gross weight: 11.6kgs  
Volume: 0.22cbm

CONCEALED FAUCET AND DIVERTER  
HIGHLIGHT YOUR TASTE



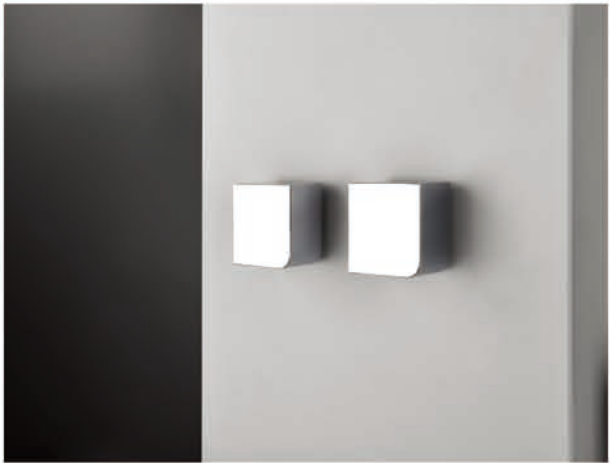
**A153**

Material:Aluminum Alloy  
Product size:1400×260mm  
Gross weight:10.3kgs  
Volume:0.093cbm





PRACTICAL SHOWER DESIGN



S050

Material:#304 Mirror finish stainless steel  
Product size:1000×300mm  
Gross weight:8kgs  
Volume:0.08cbm

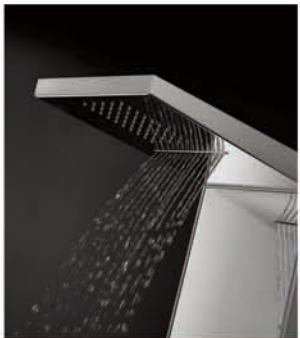
11  
12

RETO SERIES





CHROME MIRROR FINISH STAINLESS  
REFLECT YOUR SPECIAL HIGH END TASTE



**S051**

Material:#304 Mirror finish stainless steel  
Product size:1000×230mm  
Gross weight:11.5kgs  
Volume:0.06cbm

13  
14





INTERNATIONAL DESIGN AWARD  
2 FUNCTION EASY CLEAN SHAMPOO SHELF  
GREAT NEW DIVERTER

**S052**

Material:#304 Mirror finish stainless steel  
Product size:1200×220mm  
Gross weight:11.5kgs  
Volume:0.07cbm



SHOWER PANEL AND BATHROOM CLOSET  
SPECIAL DESIGN FOR BETTER SHOWER



S053

Material:#304 Mirror finish stainless steel  
Product size:1100×400mm  
Gross weight:15kgs  
Volume:0.01cbm





MULTI MASSAGE JET  
GREAT SHOWER AT HOME



**S168**

Material: #304 Mirror finish stainless steel  
Product size: 1500×180mm  
Gross weight: 9kgs  
Volume: 0.084cbm





# GITE SERIES 杰特系列





LUXURY LOOK,HIGH QUALITY SHOWER



Material:Aluminum Alloy  
Product size:1400×220mm  
Gross weight:10.5kgs  
Volume:0.2cbm





BLACK AND WHITE,TIMELESS CLASSIC



A053

Material:Aluminum Alloy  
Product size:1400×220mm  
Gross weight:7.3kgs  
Volume:0.078cbm

GITE SERIES





## NEW SHOWER JET ALL FUNCTION TOGETHER

### A055

Material: Aluminum Alloy  
Product size: 1500×200mm  
Gross weight: 8.3kgs  
Volume: 0.19cbm



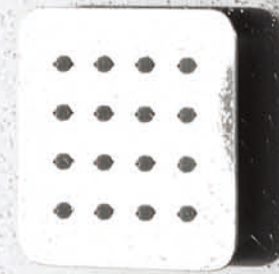
27  
28



GITE SERIES



# YOSE SERIES 雅颂系列







### AA102

Material:Aluminum Alloy  
Product size:1600×220mm  
Gross weight:9.6kgs  
Volume:0.2cbm



### SA102

Material:#304 Anti-fingerprint stainless steel  
Product size:1600×200mm  
Gross weight:12kgs  
Volume:0.2cbm



ULTRA THIN SHOWER JET  
GREAT MASSAGE



**SA108**

---

Material:#304 Matt finish stainless steel  
Product size:1600×200mm  
Gross weight:11.7kgs  
Volume:0.2cbm

---





SPECIAL NEW DESIGN SHOWER



SA109

Material:#304 Mirror finish stainless steel  
Product size:1500×200mm  
Gross weight:10kgs  
Volume:0.084cbm





**SA110-1**  
**TEAK**

---

Material:Wood grain stainless steel  
Product size:1600×220mm  
Gross weight:12.6kgs  
Volume:0.2cbm

---



SA110-2  
YELLOW PEAK



SA110-3  
RED TEAK



SA110-4  
OAK







SEPARATE DIVERTER AND FAUCET  
UNIQUE DESIGN



### SA111

Material: #304 Anti-fingerprint stainless steel  
Product size: 1600×200mm  
Gross weight: 11.4kgs  
Volume: 0.22cbm



# BEAUTY SERIES 比优系列



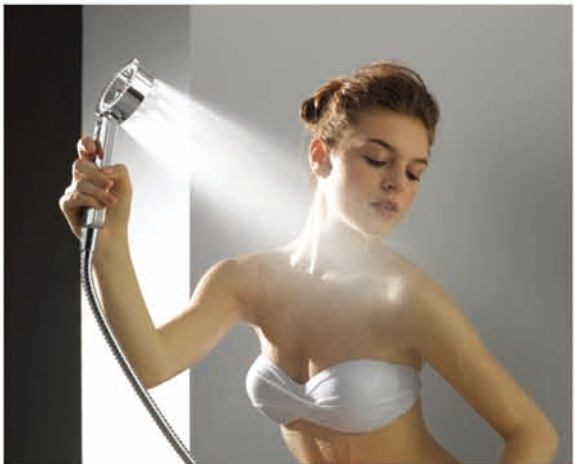


PATENT DESIGN SHAMPOO SHELF



S270

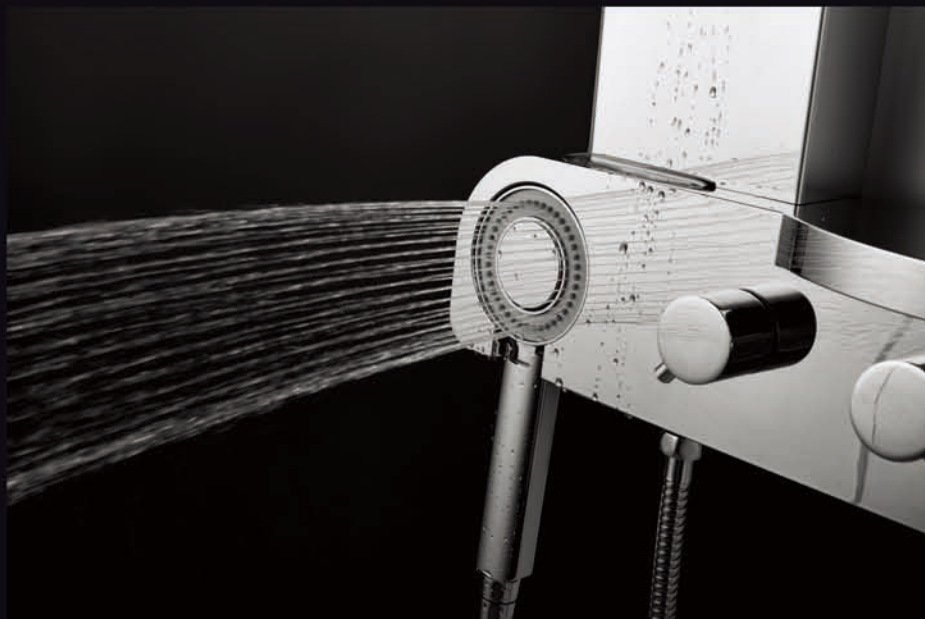
Material:#304 Mirror finish stainless steel  
Product size:1100×350mm  
Gross weight:7.8kgs  
Volume:0.097cbm



S300

Material:#304 Mirror finish stainless steel  
Product size:1120×440mm  
Gross weight:7.3kgs  
Volume:0.085cbm





GREAT DESIGN  
GREAT MASSAGE JET  
ALL CHROME MIRROR



**S300-2**

Material: #304 Mirror finish stainless steel  
Product size: 1120×440mm  
Gross weight: 8.2kgs  
Volume: 0.085cbm



STATIC BEAUTY



S300-3

Material:Aluminum Alloy  
Product size:1120×440mm  
Gross weight:6kgs  
Volume:0.093cbm





5 FUNCTIONS  
RAIN SHOWER  
HAND SHOWER  
SHAMPOO SHELF



MASSAGE



MIST



SHOWER MASSAGE



SHOWER PLUS



SHOWER



**S303**

Material:#304 Mirror finish stainless steel  
Product size:940×510mm  
Gross weight:7kgs  
Volume:0.058cbm



# DORE SERIES 达瑞系列







FAST INSTALLATION WITH EXIST FAUCET  
NO NEED REMODELING



**A056**

Material:Aluminum Alloy  
Product size:1000×110mm  
Gross weight:3.5kgs  
Volume:0.036cbm

**A057**

Material:Aluminum Alloy  
Product size:1000×100mm  
Gross weight:3.5kgs  
Volume:0.036cbm



ALL IN ONE, FOR EVERYONE

### A058

Material:Aluminum Alloy  
Product size:1300×130mm  
Gross weight:6.5kgs  
Volume:0.136cbm



### A059

Material:Aluminum Alloy  
Product size:1250×150mm  
Gross weight:6.5kgs  
Volume:0.07cbm



### S055

Material:#304 Mirror finish stainless steel  
Product size:1250×200mm  
Gross weight:9kgs  
Volume:0.07cbm





FAST INSTALLATION WITH EXIST FAUCET  
NO NEED REMODELING

#### S056

Material:#304 Brush finish stainless steel  
Product size:1300×130mm  
Gross weight:7.5kgs  
Volume:0.12cbm



#### S057

Material:#304 Anti-fingerprint stainless steel  
Product size:1250×130mm  
Gross weight:7.5kgs  
Volume:0.07cbm





# TISI SERIES 天思系列

DESIGN FOR SWIMMING POOL AND BEACH



## S165

Material: #304 Brush finish stainless steel

Product size: 2000×110mm

Gross weight: 10kgs

Volume: 0.13cbm





WATERFALL RAIN SHOWER  
WATERFALL FOOT SHOWER



S305

Material: #304 Brush finish stainless steel  
Product size: 2100x100mm  
Gross weight: 10.5kgs  
Volume: 0.13cbm



INDEX

A050

P03

S050

P11

A051

P05

S051

P13

A052

P24

S052

P15

A053

P26

S053

P18

A055

P27

S055

P56

A056

P53

S056

P57

A057

P54

S057

P58

A058

P55

S165

P60

A059

P56

S168

P20

A152

P07

S270

P43

A153

P10

S300

P44

S300-2

P46

S300-3

P48

S303

P50

S305

P61

AA102

P31

SA102

P32

SA108

P34

SA109

P36

SA110

P37

SA111

P39